

文化財保存学

C O N S E R V A T I O N

文化財保存学専攻は、大学院に設置された専攻であり、日本画・油画・彫刻・工芸・建造物の5講座からなる保存修復研究領域と、保存科学研究領域、システム保存学研究領域の3つの研究領域で構成されています。

当専攻では、文化財について人文科学ならびに自然科学の視点から調査を行い、その成果を踏まえた保存と修復の実践的な研究、制作当時の素材や技法の再現を試みた模写・模刻・模造の制作など多岐にわたる教育研究に取り組んでいます。

The Department of Conservation is a course offered in our graduate school. The department's program spans three separate areas of research: conservation (with programs in the five disciplines of Japanese painting, oil painting, sculpture, crafts, and buildings and districts); conservation science; and preventive conservation.

The coursework within this major consists of studies into cultural assets from the perspectives of humanities and natural sciences; practical research on preservation and restoration based on those studies; reproduction of painting, sculptures and other artwork using materials and techniques of when they were originally created; and various other studies and research.

[修士]

- 保存修復[日本画]
- 保存修復[油画]
- 保存修復[彫刻]
- 保存修復[工芸]
- 保存修復[建造物]
- 保存科学
- システム保存学
- [指導教員]
- 荒井経
- 國司華子
- 土屋裕子
- 秋本貴透
- 岡田靖
- 森淳一
- 小島久典
- 北野珠子
- 小椋範彦
- 三上亮
- 橋本圭也
- 上野勝久
- 光井渉
- 桐野文良
- 塚田全彦
- 貴田啓子
- 朽津信明
- 犬塚将英
- 早川典子
- 佐藤嘉則
- 安倍雅史
- 前川佳文

[Master]

- Japanese Painting (Conservation) Master
- Oil Painting (Conservation) Master
- Sculpture (Conservation) Master
- Crafts (Conservation) Master
- Buildings and Districts Master
- Conservation Science Master
- Preventive Conservation Master

[Faculty]

- ARAI Kei
- KUNISHI Hanako
- TSUCHIYA Yuko
- AKIMOTO Takayuki
- OKADA Yasushi
- MORI Junichi
- KOJIMA Hisanori
- KITANO Mariko
- OGURA Norihiko
- MIKAMI Ryo
- HASHIMOTO Keiya
- UENO Katsuhisa
- MITSUI Wataru
- KIRINO Fumiyoshi
- TSUKADA Masahiko
- KIDA Keiko
- KUCHITSU Nobuaki
- INUZUKA Masahide
- HAYAKAWA Noriko
- SATO Yoshinori
- ABE Masashi
- MAEKAWA Yoshifumi

保存修復[日本画] | Japanese Painting [Conservation]

修士 | Master →

伝雅楽之助筆「保元の乱為朝図屏風」
東京藝術大学蔵の現状模写および装潢 | 楽嘉怡
紙本着色・薄美濃紙・膠・墨・天然顔料・金泥・金箔・屏風装

A Precise Reproduction and Mounting of the "Samurai Tametomo in the Hōgen Rebellion" by Utanosuke | YUE Jiayi
color on paper, japanese paper(usumino), animal glue, sumi ink, natural pigments, gold paint, gold leaf, folding screen

H71.3×W233.6×D1.5cm

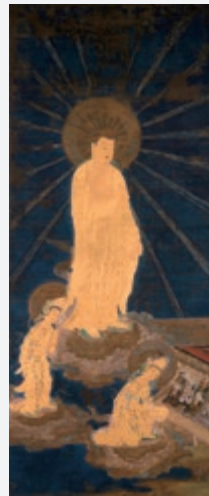


「阿弥陀三尊来迎図」
東京藝術大学蔵の現状模写および装潢 | 小松拓也
絹本着色・膠・墨・天然顔料・金泥・金箔・掛幅装

A Precise Reproduction and Mounting of "Amitabha Triad to Greet Figure" in the Collection of Tokyo University of The Arts KOMATSU Takuya

color on silk, animal glue, sumi ink, natural pigments, gold paint, gold leaf, Hanging scroll

H119.8×W50.5cm



重要文化財「浄瑠璃寺吉祥天厨子絵のうち弁財天及び四眷属像」
東京藝術大学蔵の現状模写 | 可児貴子
板絵着色・檜・漆・膠・墨・天然顔料・金泥

A Precise Reproduction of Important Cultural Property "Benzaiten and Four dependents" in "Joruri temple" in the Collection of Tokyo University of The Arts | KANI Takako

color on wooden board, cypress, urushi, animal glue, sumi ink, natural pigments, gold paint

H103.6×W62.1×D1cm



「水月観音像」東京藝術大学蔵の現状模写および装潢 | 鄭旻雅
絹本着色・膠・墨・天然顔料・金泥・掛幅装

A Precise Reproduction and Mounting of "Water-Moon Avalokitesvara" in the Collection of The University Art Museum-Tokyo University of The Arts | JUNG Mina

color on silk, animal glue, sumi ink, natural pigments, gold paint, Hanging scroll

H123.5×W60.3cm



保存修復 [日本画]

Japanese Painting [Conservation]

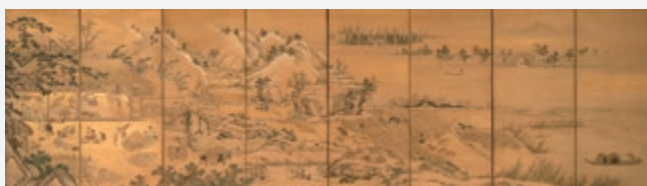
修士 | Master →

狩野山雪筆「四季耕作図屏風」

東京藝術大学蔵の現状模写および装潢 | 平片仁也
紙本着色・名塩雁皮紙・膠・墨・天然染料・天然顔料・金泥・屏風装

A Precise Reproduction and Mounting of "Farming Scenes in the Four Seasons" by Kano Sansetsu in the Collection of Tokyo University of The Arts | HIRAKATA Jinya
color on paper, japanese paper(najio gampi), animal glue, sumi ink, natural dyes, natural pigments, gold paint, folding screen

H101.1 × W363.6 × D1.4cm



保存修復 [油画]

Oil Painting [Conservation]

修士 | Master →

《個人修復作品》東京藝術大学大学美術館所蔵
内野猛『雪』 | 三浦早貴
油彩・木板

《Conservation Treatment》UCHINO Takeshi "Snow"
MIURA Saki
Oil on panel
H42 × W51 × D2.2cm



修復前



修復後

《共同修復作品》東京藝術大学大学美術館所蔵
湯浅 一郎『水仙花』 | 岡田裕梨、松井菜那
油彩・ボール紙

《Conservation Treatment》YUASA Ichiro "Narcissus"
OKADA Yuri, MATSUI Nana
Oil on paper
H48.5 × W37.8 × D8cm



修復前



修復後

保存修復 [彫刻]

Sculpture [Conservation]

修士 | Master →

《共同修復作品》東京藝術大学大学美術館所蔵
湯浅 一郎『風雲』 | 松井菜那、岡田裕梨
油彩・キャンバス

《Conservation Treatment》YUASA Ichiro "Wind and Cloud"
OKADA Yuri, MATSUI Nana
Oil on canvas
H41.5 × W53.9 × D6.4cm



修復前



修復後

山梨県大福寺木造聖観音立像復元模刻 | 廣崎萌
ヒノキ、木彫

Reproduction of wooden standing statue of Sho Kannon at
Daifuku Temple in Yamanashi | HIROSAKI Moe
Japanese cypress, wood carving
H113 × W36 × D28.5cm



山形県本山慈恩寺木造大日如来坐像模刻 | 劉常民
ヒノキ、木彫

Reproduction of wooden sitting statue of Dainichi nyorai at Jionji
Temple in Yamagata | LIU Changmin
Japanese cypress, wood carving
H73 × W50.8 × D41.5cm



保存修復[工芸] | Crafts [Conservation]

修士 | Master →

中村勝馬の活動記録からみる東京藝術大学美術館所蔵
《七宝に鱗紋黒留袖》の一部再現について | 石原真理
絹・友禅・刺繍

Reproduction of a piece of "Shippou Urokomon Kurotomesode"
drawn from the collection of The University Art Museum, Tokyo
University of the Arts, and produced based on documents from
the university's Katsuma Nakamura archive. | ISHIHARA Mari
silk · yuzen dyeing · embroidery

H33×W31cm



南蛮漆器の製作工程に関する研究

— 東京藝術大学大学美術館所蔵「花鳥蒔絵螺鈿小箆筒」の修復を通じて

戸田詠美理

黒漆塗・蒔絵・螺鈿 / 漆・金・銀・螺鈿・木・銅

A Study on the production process of Namban lacquerware
— Through the reproduction and restoration of the “Kacho Makie
Raden Small Chest” collection of the University Art Museum,
Tokyo University of the Arts | TODA Emiri [Toda Emily]
urushiwork · makie · raden / urushi · gold · silver · shell · wood · copper

H10×W11.5×D3.2cm, H7.9×W32.4×D1.9cm

